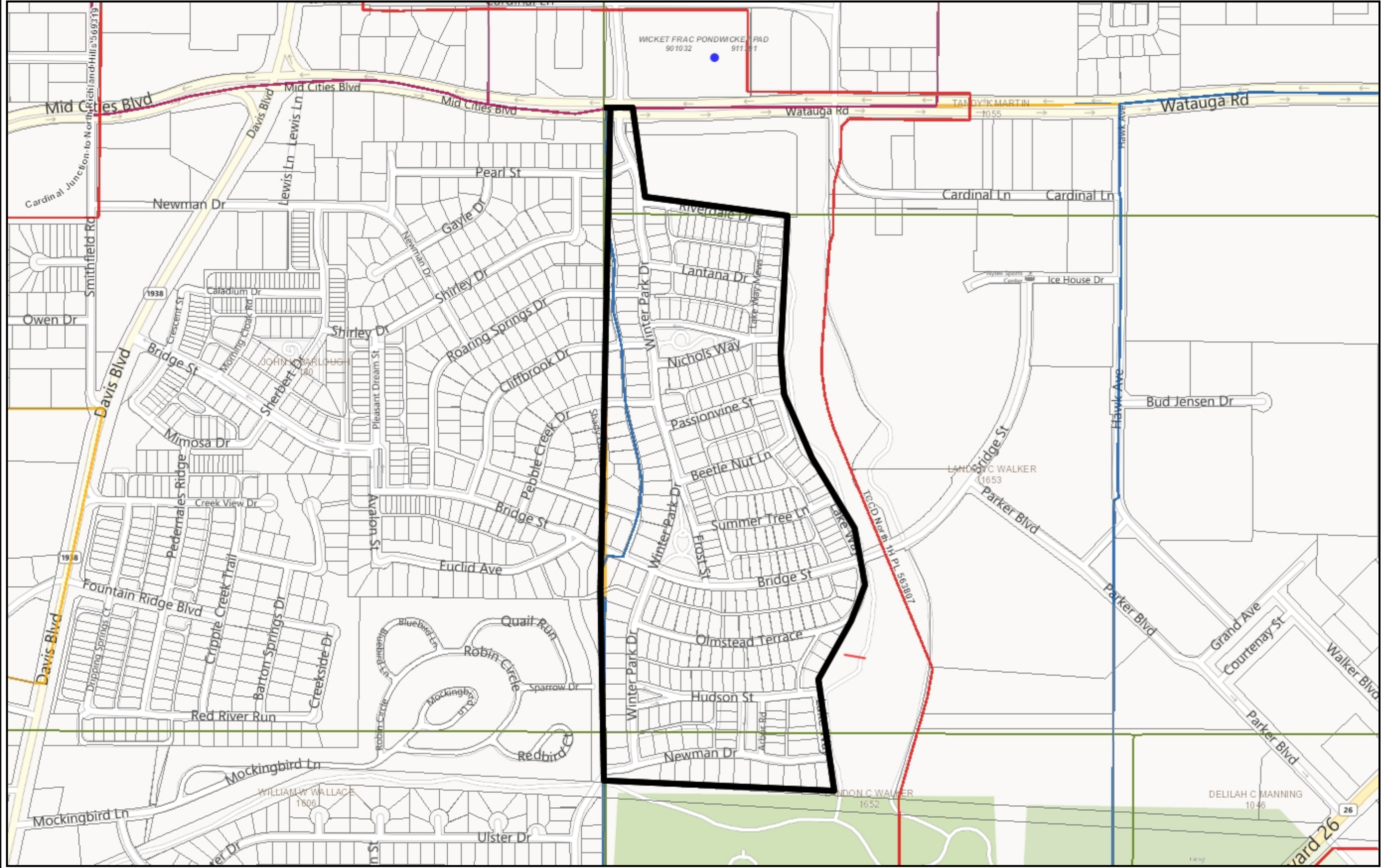
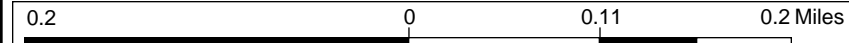


# EXHIBIT A PART 1



- Legend**
- WELL**
- OPERATED WELL
  - NON-OPERATED WELL
  - ▲ COMPRESSOR STATION
  - ✕ VALVE SITE
  - ◆ Meter - Midstream
  - COI Meter - FlowCal
- PIPELINE**
- <all other values>
  - Midstream, Active
  - COI/CAL, Active
  - NonOp, Active
  - Leased, Active
  - Midstream, Partially Constructed/M
  - COI/CAL, Partially Constructed/Mer
  - Midstream, Not in Service
  - COI/CAL, Not in Service
  - NonOp, Not in Service
  - Leased, Not in Service
  - Midstream, Route Execution
  - COI/CAL, Route Execution
  - Route Development
  - Route Initiation
- OWNERSHIP**
- PROSPECT
  - UNIT (CHK)
    - ACTIVE
    - PROPOSED
    - THEORETICAL
  - ABSTRACT
  - TOWNSHIP
  - SECTION

1: 7,039



WGS\_1984\_Web\_Mercator\_Auxiliary\_Sphere  
© Chesapeake Energy Coporation

This map is a user generated static output from an Internet mapping site and is for reference only. Data layers that appear on this map may or may not be accurate, current, or otherwise reliable.

THIS MAP IS NOT TO BE USED FOR NAVIGATION

**Notes**  
NHMOC Group in TCCD South